



Photo courtesy of U.S. Navy



Controlled Dehumidification Solutions

ARID-Dry™
Restoration and Construction
Drying Equipment
Mobile Desiccant Dehumidifiers
Temporary Humidity Control

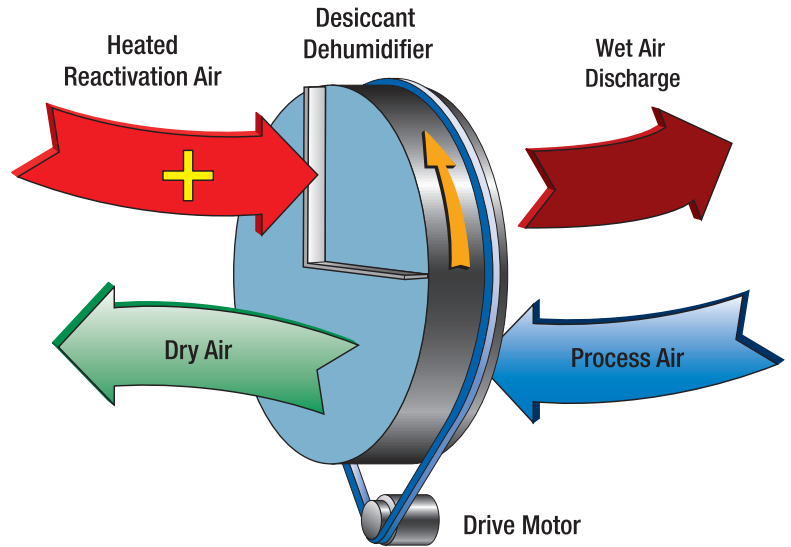
INTRODUCING CDIMS

CDIMS is a flexible engineering and manufacturing company building large-capacity desiccant dehumidification systems for a wide variety of industrial and commercial applications.

The ARID-Dry™ mobile product is comprised of large-capacity desiccant dehumidifiers to remove ambient water vapor from air. Large-capacity desiccant dehumidification units are used in a variety of industries, including water damage and remediation, document drying, industrial surface preparation for coating, mold and fungus prevention, long-term lay-up of industrial equipment, and industrial condensation prevention. We have the capability to incorporate many additions to provide complete solutions for the temporary humidity control market.

Special attention is paid to construction details to provide a resilient unit capable of meeting the demands of the rental and temporary humidity control market. The units incorporate state-of-the-art features to maintain peak efficiency. Our wide variety of sizes can be applied from the smallest residential project to the largest commercial industrial project.

Our goal is to maintain the highest ethical standards and professionalism in order to best satisfy our customers.



Desiccant Dehumidification

A simple solution to an old problem. Solid desiccant rotor absorbs moisture from process air. Heat is used to "reactivate" the desiccant.

Why Use ARID-Dry™ Desiccant Technology?

- Very dry air can be achieved.
- **Better thermodynamic efficiency:** Achieved because no change of phase (condensation) is necessary.
- **Simple construction:** Basic dehumidifier includes only two fans, a heater and the desiccant rotor assembly.
- **Simple maintenance:** Simply replace filters regularly and performance is assured. A yearly inspection by our service technicians is recommended to head off unscheduled outages.
- **Better Construction:** Double-wall insulated casing suitable for indoor or outdoor mounting.
- **Modern Controls:** CDIMS includes standard intelligent microprocessor controllers with "Fail-Capable" mode.

Better Humidity Control Through ARID-Dry™ Design

- **More Sizes:** Units range from 600 to 40,000 CFM.
- **More Flexibility:** Total system integration is available including heating, cooling, enthalpy recovery, and special filtration. Even custom configurations are available to meet unique project requirements.
- **More Support:** Application engineering assistance, start-up and owner training, and preventative maintenance programs offered by CDIMS.



MS SERIES CAPACITY DATA

| Series | Max Air Volume* | Electric Reactivation FLA Load | | Gas Reactivation FLA Load | | CFH Gas Max Usage Natural | Gallon/HR Max Usage LP |
|----------------|-----------------|--------------------------------|----------|---------------------------|----------|---------------------------|------------------------|
| | | 220/1/60 | 460/3/60 | 220/1/60 | 460/3/60 | | |
| MS-600 | 600 | 24 | 8.2 | NA | NA | NA | NA |
| MS-1000 | 1,000 | 72 | NA | NA | NA | NA | NA |
| MS-2400/2000 | 2,400 | NA | 51 | 30 | NA | 120 | 2 |
| MS-3600/3000 | 3,600 | NA | 84 | 39 | NA | 200 | 2 |
| MS-4800/4000 | 4,800 | NA | 104 | 45 | NA | 320 | 3 |
| MS-6000/5000 | 6,000 | NA | 138 | NA | 13 | 400 | 4 |
| MS-8500/7500 | 8,500 | NA | 200 | NA | 17 | 600 | 6 |
| MS-14500/12000 | 14,500 | NA | 268 | NA | 35 | 900 | 10 |
| MS-17500/15000 | 17,500 | NA | 335 | NA | 44 | 1,200 | 13 |

| Series | Max Air Volume* | Moisture Removal 80°/60% RH | | Moisture Removal 55°/80% RH | | Moisture Removal 40°/80% RH | |
|----------------|-----------------|-----------------------------|--------------|-----------------------------|--------------|-----------------------------|--------------|
| | | Lbs per hr. | Gals per day | Lbs per hr. | Gals per day | Lbs per hr. | Gals per day |
| MS-600 | 600 | 8 | 23 | 6 | 18 | 5 | 16 |
| MS-1000 | 1,000 | 24 | 68 | 21 | 59 | 14 | 39 |
| MS-2400/2000 | 2,400 | 50 | 143 | 42 | 120 | 25 | 71 |
| MS-3600/3000 | 3,600 | 82 | 236 | 70 | 201 | 45 | 129 |
| MS-4800/3000 | 4,800 | 102 | 295 | 87 | 251 | 56 | 161 |
| MS-6000/5000 | 6,000 | 136 | 392 | 115 | 331 | 75 | 216 |
| MS-8500/7500 | 8,500 | 210 | 605 | 175 | 504 | 121 | 348 |
| MS-14500/12000 | 14,500 | 334 | 962 | 281 | 809 | 193 | 556 |
| MS-17500/15000 | 17,500 | 424 | 1,221 | 355 | 1,022 | 242 | 697 |
| MS-27500/25000 | 27,500 | 678 | 1,953 | 568 | 1,635 | 387 | 1,115 |

Moisture removal is nominal only for reference; Actual Performance will be based on specified conditions. *Maximum volume rated at 0" ESP.

Typical component options include:

- Unit-Mounted Filters, Options Include:
 - 10% Permanent Washable 2" Thick Industrial
 - 30% 2" (standard) Pleated Throw Away
 - 55% to 65% 4" Cartridge Throw away
 - 99.97% HEPA 12" Cartridge
- G-90 16-Gauge Galvanized Double-Wall Construction with Insulation
- Cooling Coil and Heating Coil Options
- Direct-Fired Natural-Gas, Electric or Propane Reactivation Systems
- Skid or Trailer Mounted
- Full Protective Enclosure
- Integrated Control System with 10-Point Operational Function Display
- Shipping Covers for All Inlets and Outlets
- Packaged Refrigeration System Options
- Packaged Generator System Options



MS-27500/25000 trailer-mounted dehumidifier.

CDIMS, **ARID-Dry** mobile desiccant dehumidifiers provide temporary humidity control for water damage and restoration, mold and fungus prevention and new construction dehumidification.

When drying interior spaces, humidity control is crucial. An ARID-Dry mobile dehumidifier increases your productivity and profitability. The advantages of using large capacity mobile dehumidifiers with your projects are many. You can get more consistent drying cycles, faster and more consistent drying times. It's also the most effective system on the market, outperforming refrigeration and convection-style heat-drying methods.

ARID-Dry skid and trailer mounted units are the leading solutions available for quickly and efficiently removing ambient water vapor from air. Useful in surface preparation, painting and coating and industrial condensation prevention, ARID-Dry is the best-in-class dryer available.

Water Damage and Restoration

When building materials come in contact with water due to piping failures, flooding or storms, losses can be contained by quickly drying out the structure. Desiccant dehumidifiers are used to quickly provide a low- dewpoint air stream to facilitate restoration of the structure. The low dew point acts as a sponge to pull moisture from building materials.

Mold and Fungus Prevention

Mold and fungus are normally dormant. When a building or structure is exposed to high humidity levels or liquid water due to flooding or leaks, the mold will proliferate rapidly. Drying out a structure completely and quickly is important to reduce the possibility of mold contamination. Desiccant dehumidifiers are the most cost- effective way to provide the deep drying needed to extract water from the building and interior components.



Photo courtesy of U.S. Navy

Water damage due to storms.



Skid-mounted - MS-6000/5000



A trailer-mounted - MS-6000/5000, with generator and an enclosed trailer-mounted - MS-2400/2000.

ARID-Dry DEHUMIDIFIERS FOR TEMPORARY HUMIDITY CONTROL



Enclosed trailer-mounted - MS-6000/5000.



Trailer-mounted - MS-3600/3000 with generator.

New Construction Dehumidification

Many materials used in new construction contain large quantities of water. Concrete and other construction materials evaporate water as they cure. If the material is covered before all the water has evaporated, hidden mold can form, causing odors and potential mold contamination. Modern construction technicians are now using desiccant dehumidification to reduce the possibility of mold contamination, and, in many cases, speed the drying process. This can result in faster construction schedules.

CDIMS builds the largest- capacity mobile dehumidifier available. Systems utilize natural gas, propane, or electric reactivation.

ARID-Dry is more thermodynamically efficient because there's no change-of-phase necessary. It's simple design makes it highly reliable, while our superior construction makes the system dependable day-in and day-out in the most demanding environments. Our intelligent microprocessor even makes using ARID-Dry equipment easy to monitor!

FEATURES AND BENEFITS

- The standard is a microprocessor controller for reactivation rate and safeguard functions, and also for heating and cooling functions if these options are present. Terminal-strip connection points are included for customer use for alarming, monitoring, and for communication with a building management system.
- Each unit is ETL Listed and approved. Every item shipped carries a full ETL approval including all options in compliance with the current mechanical code. We also have the ETL-C listing for Canadian projects. On European projects, we can provide country-specific C-E approvals.

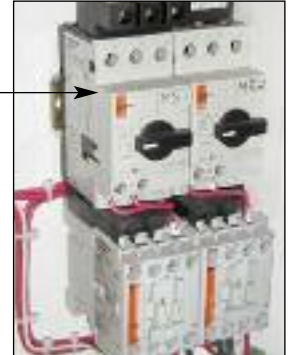


- The microprocessor reactivation controller maintains a constant burner-output temperature, so burning the desiccant rotor is unlike other manufactures. In addition, modulating via a reset schedule minimizes energy use. Full-rated performance is available in cool weather because it is not necessary to limit the firing rate as other manufacturers do.
- Our reactivation burner flame safeguard system is an industrial Honeywell R7895A instead of a commercial-or residential style "ignition module." The standard gas train on gas-fired units is an ANSI type, and includes inlet regulator, automatic main and pilot valves, an electronic modulating valve, in addition to safety manual valves.

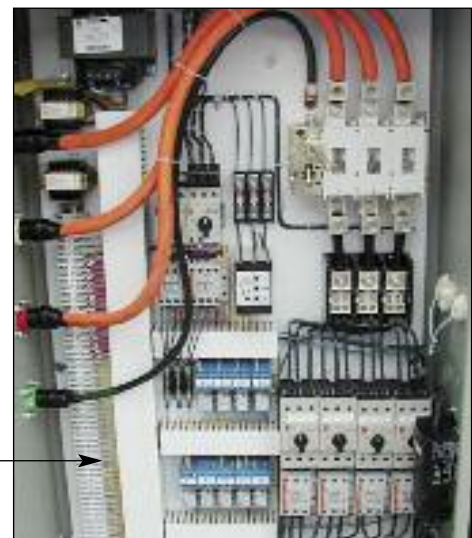


- Reactivation temperature sensors are 500°F rated Platinum thermistors.

- The units use combination circuit breaker/overload starters for fan motors. This eliminates the need for spare power fuses, and saves the customer downtime because, if an upset occurs, a simple reset will bring the unit back online.



- Electric heater banks with individual circuit breaker protection.
- Wiring to industrial terminal strips makes for easier connection and troubleshooting.



- A remote humidistat with cord.



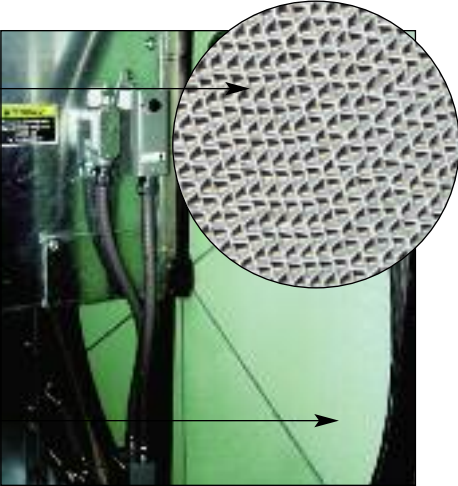
- Graphic Function Display annunciation panel to provide indication of operation status.



- A full-perimeter sprocket with a #40 molly chain drives our desiccant rotor. This is more durable than any other system on the market.



- Stabilized silica gel is permanently bonded to a low specific-heat substrate for long-lasting dehumidification performance at maximum efficiency. The desiccant rotor rim and cassette are Stainless Steel for durability and strength.



- Our desiccant rotor seals are dual-contact, Viton extruded seals, designed to last for the life of the unit. This is the most durable seal in the industry.
- Standard Blowers are backward inclined, nonoverloading rated for total static pressure. Wherever possible, blowers are directly coupled to fans to eliminate belts and external bearings.



- Optional, high static pressure control damper.



- Protective guard over blower discharge area.



- Removable shipping covers to protect unit in shipment.
- The standard unit construction is G-90 galvanized Steel, double-wall, and insulated. It is very rugged, and includes airtight, gasketed access doors for access to components.



- Multiple components and configurations provide a versatile unit to meet every application requirement.

ARID-Dry MOBILE PRODUCTS

CDIMS is the largest mobile dehumidifier systems manufacturer in North America. Our equipment is offered by the largest heavy equipment renters in the United States.

Choose from an extensive line of dehumidifiers for jobs of all sizes, with lots of options and world-class support to make sure you're on the right track.

To increase profits and build your business, you need the best.
You need ARID-Dry.



Enclosed Trailer - MS-3600/3000



Caster-Mounted - MS-2400/2000



Trailer-Mounted - MS-27500/25000



Trailer-Mounted - MS-17500/17000



Enclosed Trailer - MS-2400/2000



Controlled Dehumidification Solutions

Application and Sales Office

5931 Ford Court
Brighton, Michigan 48116

810.229.7900

Fax: 810.229.7908

sales@cdims.com

www.cdims.com